

**SDE**



**GENMOUNTS**  
SOLAR RACKING SYSTEMS



**1.2 Megawatt Carport Array**  
**Lawrence Township, NJ 08648**

***Solar  
Carport  
Systems***

## ENGINEERING

## MANUFACTURING

## INSTALLATION

### Engineering Services

*Every carport project is unique, as multiple factors can impact the PV layout and structural design.*

- Parking lot orientation and space
- City/County/State Regulations
- ASCE Hazard & Structural Guidelines

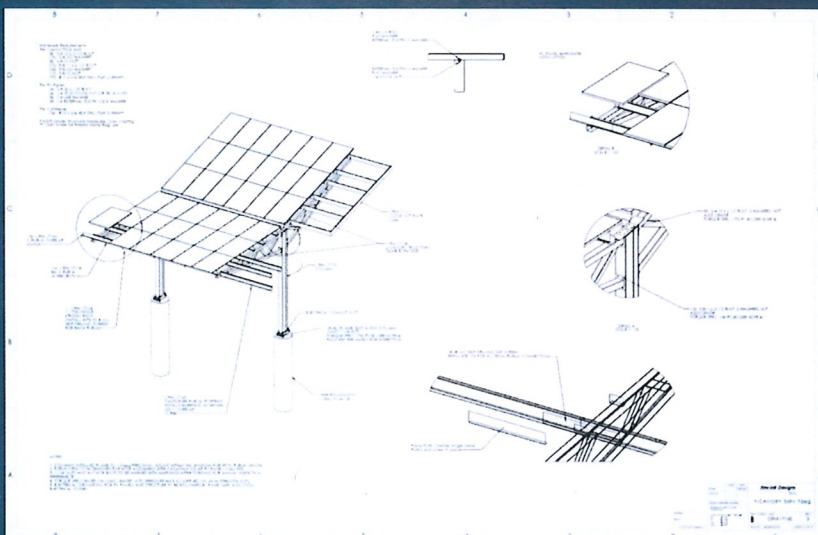
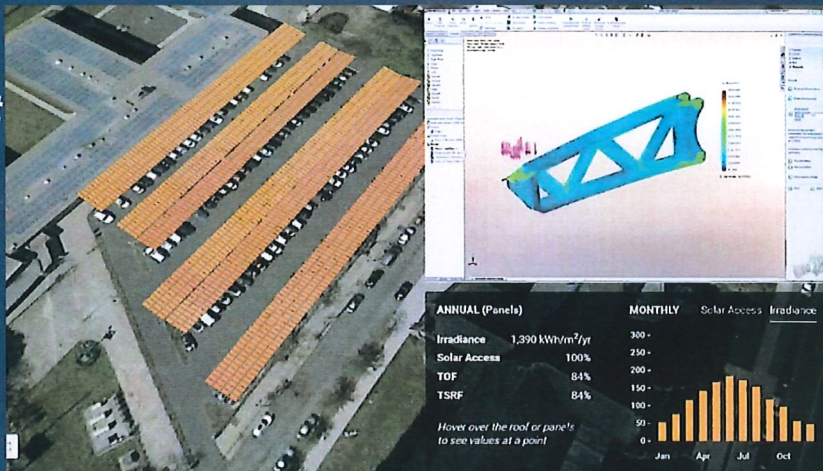
*No matter what variables arise, our executive engineering team will design a system that offers you the most cost effective solution for your project.*

### PV Production vs Aesthetics

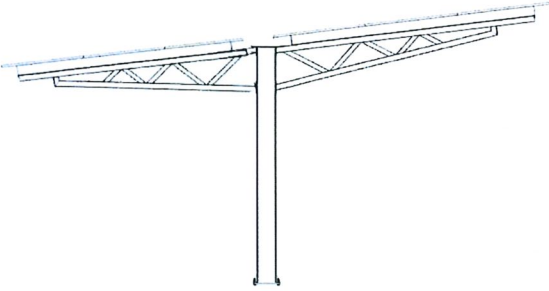
*After our NABCEP PV designers finalize the layout that meets your energy production requirements, our structural and civil engineers will provide all of the certified drawings and calculations for permit approval.*

### SDE Product Standards

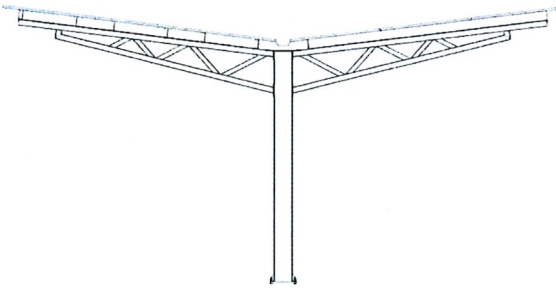
*All structural components are in strict compliance with the standards set forth by the American Iron and Steel Institute's Specifications for Formed Steel Structural Members. SDE has invested in an ISO-9001 Quality certification (currently in progress).*



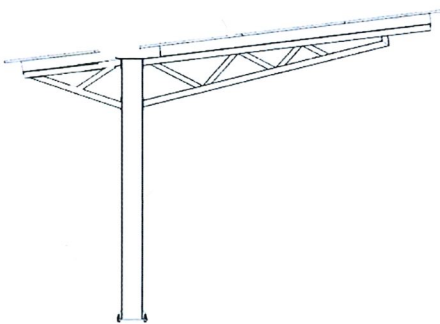
**T-FRAME DESIGN (36x 72 Cell Modules/Section)**



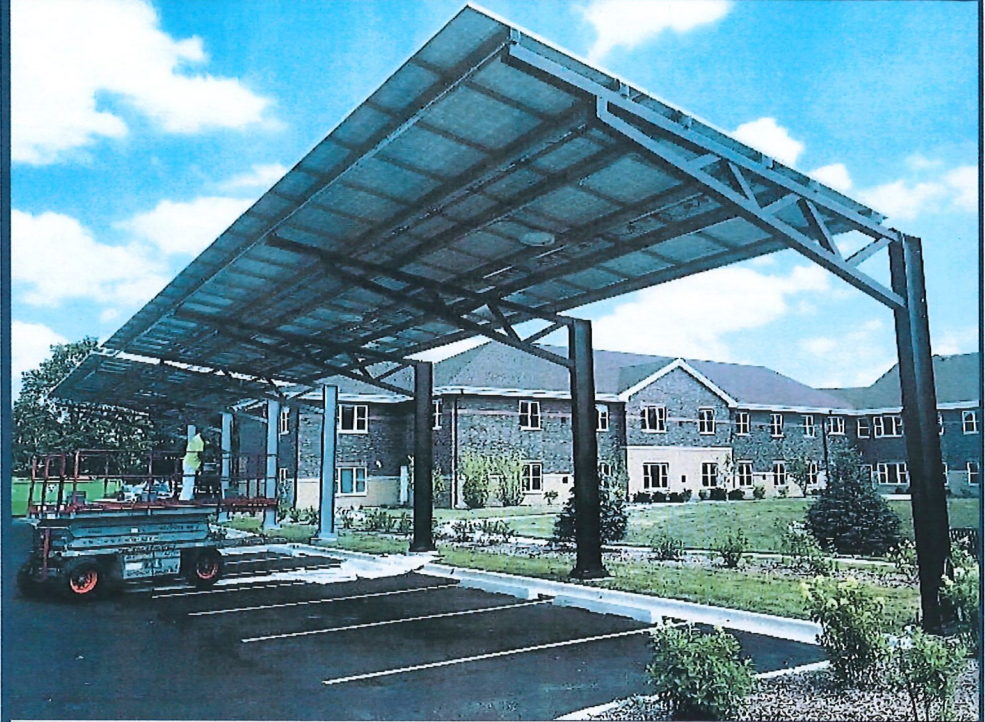
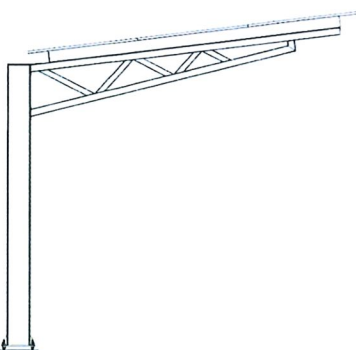
**Y-FRAME DESIGN (36x 72 Cell Modules/Section)**



**L-FRAME DESIGN (24x 72 Cell Modules/Section)**



**L-FRAME DESIGN (18x 72 Cell Modules/Section)**



Application	Parking Area & Sidewalks	Modules Per Section	36
Tilt Angle	7 Degrees	Ground Clearance	Site Specific
Module Orientation	Portrait	Foundation	Reinforced Concrete
Wind Load	125 MPH	Purlin Length	236 Inches
Snow Load	50 PSF	Manufacturing	Made in Michigan, USA
Post Spacing	236 Inches		

## PRODUCT SPECIFICATIONS

All product specifications have been verified through third party engineering firms. For areas with higher wind/snow requirements, additional options are available.  
20 - 34 foot section spans are available.

## PRICING OVERVIEW

SDE calculated our average cost/watt prices, using 350 - 370 Watt Modules. Prices outlined below includes foundation cages, all required racking components, hardware, and freight.

36 PANEL Y or T FRAME CANOPIES: 30 - 35 CENTS/WATT

24 PANEL L FRAME CANOPIES: 40 - 45 CENTS/WATT

18 PANEL L FRAME CANOPIES: 45 - 50 CENTS/WATT